



Hella marine
Vision and Innovation

Product News

Latest addition to the Hella marine range

EuroLED75

Stylish and energy efficient LED down lights for interior and exterior applications with a dual colour function



- Bright 190 lumen output
- Smooth diffused lens appearance
- Wide and even 80° beam angle
- High Colour Accuracy (CRI 85)
- Low power consumption 3W
- Completely sealed for wet and dry applications
- UV and impact resistant
- 5 year warranty

EUROLED 75 DUAL COLOUR DOWN LIGHTS

Offering the latest in style, functionality, performance, energy efficiency and long-lasting illumination, the EuroLED 75 Dual Colour down lights are a great addition to any vessel.

Leading LED technology delivers exceptional colour rendering, reproducing colours in their natural richness. Producing an impressive output of 190 actual lumens, with a diffused lens, creates a bright, broad and even illumination, replicating the pleasing appearance of a traditional round lamp - giving you the best of both worlds.

Available in warm white/red or white/red, which will beautifully enhance the materials of your vessel, the secondary red LED colour also adds increased functionality by enhancing nighttime visibility. Screw or spring mount options, pre-wired lamps and sized for a standard cut out make new or refit installation a breeze.

Suitable for both interior and exterior applications, wet or dry, the EuroLED 75 lamps are also completely sealed - IP67 rated. Manufactured using high-grade materials these lamps will not corrode, fade or embrittle in the harsh marine environment.

Have complete peace of mind knowing the EuroLED 75 Dual Colour lamps are tested and proven in the toughest conditions and supported with a leading 5-year warranty.



This vessel utilises warm white EuroLED 75 lamps throughout with a EuroLED 75 Dual Colour red lamp placed above the cockpit.

EuroLED 75 Dual Colour LED Down Lights



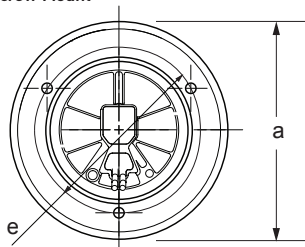
Rim material	UV resistant plastic or 316 stainless steel options
Lumens	190 lumens
Beam Angle / CRI	80°/ CRI 85
Colour Temperature	5000K (White) , 2700K (Warm White)
Dimming	Via PWM or Voltage Resistive dimmer
Cable	Pre-wired with 120mm tinned marine cable
Operating Voltage	12V DC (9-16VDC)
Power Consumption	3W (<0.19A @ 12V DC)
Degree of Protection	IP6K7 & IP6K9K (Completely sealed)
Installation	Screw or Spring Clip options
Approvals	CE, RCM
Manufactured In	New Zealand

	Voltage	Mount Type	Stainless Steel Rim	White Plastic Rim
Red/White	12V	Screw	2JA 015 247-021	2JA 015 247-011
Red/Warm White	12V	Screw	2JA 015 247-121	2JA 015 247-111
Red/White	12V	Spring clip	2JA 015 247-521	2JA 015 247-511
Red/Warm White	12V	Spring clip	2JA 015 247-621	2JA 015 247-611

Note: Bulk pack options are also available

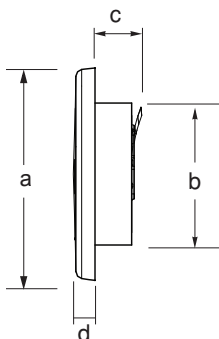


Screw Mount



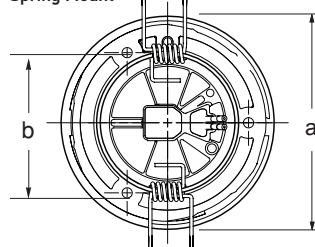
Dimensions:

a = 72.0mm (2.83") with stainless rim
75.0mm (2.95") with plastic rim

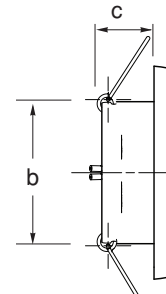


b = 50.0mm (1.96") with screw mounting
54.0mm (2.12") with spring mounting

Spring Mount



c = 16.0mm (0.63") with screw mounting
20.5mm (0.81") with spring mounting



d = 7.5mm (0.29")
e = 57.0mm (2.24") PCD

Accessory Spare Rims

Description	Part Number
White Plastic Rim	9AB 959 505-912
Polished 316 S/S Rim	9AB 959 505-402



Accessory Surface Mount Spacer Rings

Description	Part Number
Black Plastic Spacer	8HG 959 993-102
White Plastic Spacer	8HG 959 993-112

Note: Spacers only suitable for screw mount lamps

